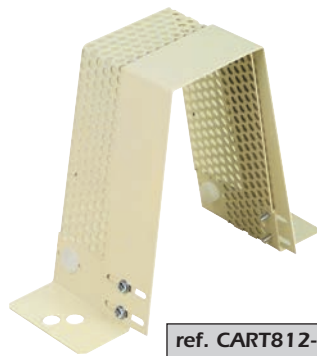


PROTECTIVE COVERS FOR MACHINE COUPLING



ref. BT80-20



ref. CART812-20



ref. CART80-20



ref. VS10

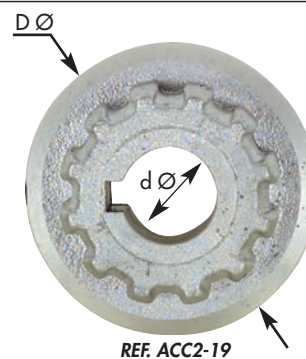
| REF | Power | Protection length | Height | Specifications |
|-------------|------------|-------------------|--------|---|
| CART300W/80 | 300W | 80mm | 125mm | Intermediate housing between 2 machines |
| CART90 | 300W | 95mm | 125mm | Intermediate housing between 2 machines |
| BT300 | 300W | 60mm | 125mm | Housing for unused end of shaft |
| VS300 | 300W | / | / | Screw + Washers + Slide Nut |
| BT80-20 | 1500W | 80mm | 185mm | Housing for unused end of shaft |
| CART80-20 | 1500W | 80mm | 185mm | Intermediate housing between 2 machines |
| CART120-20 | 1500W | 126mm | 185mm | Intermediate housing between 2 machines |
| CART812-20 | 1500W | de 80 à 115mm | 185mm | Length-adjustable intermediate housing |
| BT80-30 | 3000W | 80mm | 150mm | Housing for unused end of shaft |
| CART80-30 | 3000W | 80mm | 150mm | Intermediate housing between 2 machines |
| CART120-30 | 3000W | 126mm | 150mm | Intermediate housing between 2 machines |
| CART812-30 | 3000W | de 80 à 115mm | 150mm | Length-adjustable intermediate housing |
| VS10 | 1500/3000W | / | / | Screw + Washers + Slide Nut |

REPLACEMENT COUPLINGS



REF. ACC1-19 + AC43 + ACC1-19

These are spare parts, the rotating machines are fitted with their original couplings. A complete set of spare part couplings comprises 2 metal hubs and a rubber sleeve (3 references in total)



REF. ACC2-19

These are spare parts, as the rotating machines are fitted with their original couplings.

| REF | Power | Specification | d Ø | D Ø |
|---------|-------|---------------|--------|------|
| ACC1-14 | 300W | HUB | 14mm | 42mm |
| ACC1-17 | 300W | HUB | 17mm | 42mm |
| ACC1-19 | 300W | HUB | 19mm | 42mm |
| AC-43 | 300W | SLEEVE | sleeve | 45mm |
| ACC2-19 | 1500W | HUB | 19mm | 52mm |
| ACC2-24 | 1500W | HUB | 24mm | 52mm |
| AC-56 | 1500W | SLEEVE | sleeve | 56mm |
| ACC3-19 | 3000W | HUB | 19mm | 69mm |
| ACC3-24 | 3000W | HUB | 24mm | 69mm |
| ACC3-28 | 3000W | HUB | 28mm | 69mm |
| AC-66 | 3000W | SLEEVE | sleeve | 74mm |