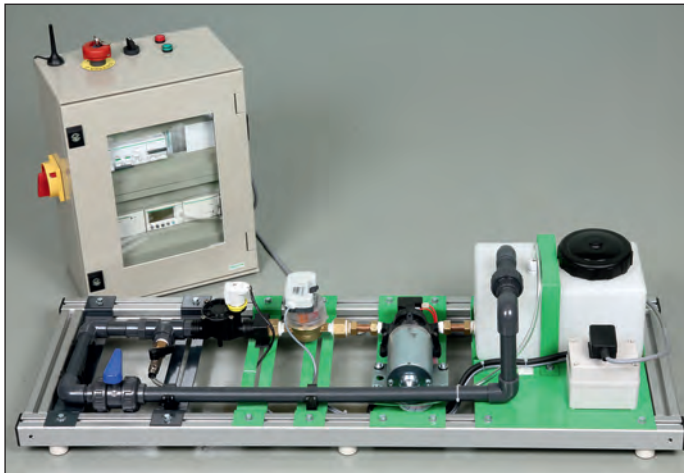


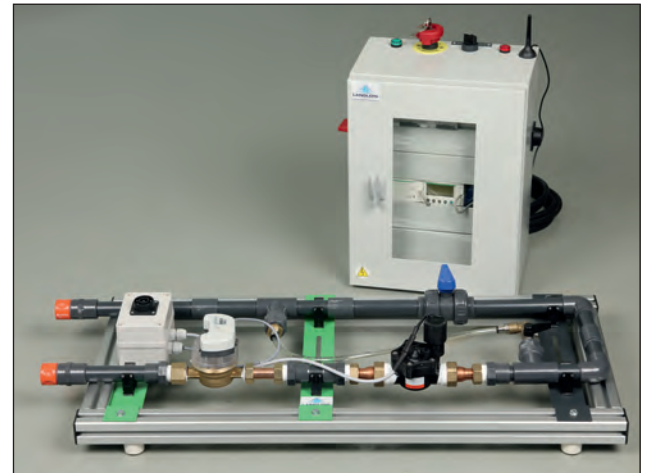
AUTOMATIC LEAK ALERT SYSTEM



ref. MAQ-FUITE-2A

Fully self-contained version thanks to its tank and pump 24V.
Requires no water inlet.
Length of the base 1005mm.

A leak of water can be very costly and statistics show that this fault is common at all distribution points. This model represents the drinking water supply circuit of a house equipped with a leak detection system and GSM alert device. When the house is declared unoccupied, a sensor, connected to the water meter, detects the slightest abnormal consumption. A GSM phone transmitter then sends an SMS to warn you of the problem. The assembly is managed by a M221 logic module.



ref. MAQ-FUITE2

Version with no pump or tank.
Requires a pressurized water inlet in the room.
Length of the base 700mm.

EDUCATIONAL OBJECTIVES

- Learning about water leak detection by sensor.
- Using a GSM phone transmitter
- Using and programming a M221 logic module

TEACHING RESOURCES STUDENT & TEACHER

Practical works

- Configuration and installation of the water leak sensor
- Configuration of the GSM phone transmitter and test with mobile phone
- Creation of the M221 logic module programmes with or without presence in the home, with or without solenoid valve control.

Composition of the system

- 1 tank, 5 litres (for the MAQ-FUITE-2A version)
- 1 pump 24VDC – 3.5A (for the MAQ-FUITE-2A version)
- 1 quick connector for water inlet (for the MAQ-FUITE2 version)
- 1 water meter
- 1 pulse sensor attached to the meter
- 1 solenoid valve 24V
- 1 valve for creating a water leak
- 1 valve for cutting off the water inlet
- 1 unit with connector for linking to the technical cabinet

Composition of the technical cabinet

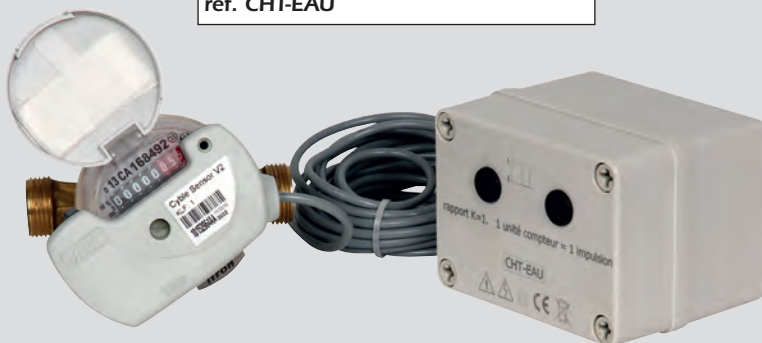
- 1 set of magneto-thermal and RC protection devices.
- 1 modular power supply 24VDC.
- 1 M221 logic module
- 1 GSM transmitter
- 1 set of switches, emergency stop and indicator lights

Features

- Dimensions of the frame
 - MAQ-FUITE-2A version: 370 x 230 x 1005mm.
 - MAQ-FUITE2 version: 370 x 230 x 700mm.
- Technical cabinet dimensions: 330 x 200 x 440mm
- Total weight, frame + cabinet
 - MAQ-FUITE-2A version: 25kg.
 - MAQ-FUITE2 version: 19 kg
- Mains power supply 230V + E with 3-metre lead
- Requires phone SIM card with subscription or prepaid.

PULSE WATER METER

ref. CHT-EAU



Water meter equipped with 2-wire pulse transmitter for remotely sending information relating to the water meter.

Ratio K = 1 - 1 meter unit equal to 1 pulse.

Connection to the water circuit using 2 quick connectors (not supplied).

